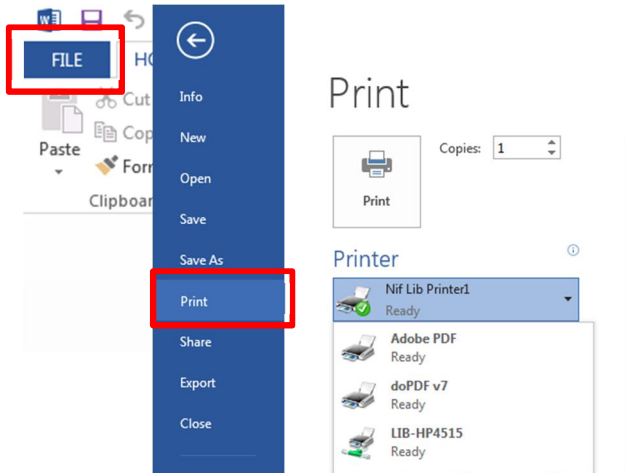


1. Select Function(**File** → **Print**)

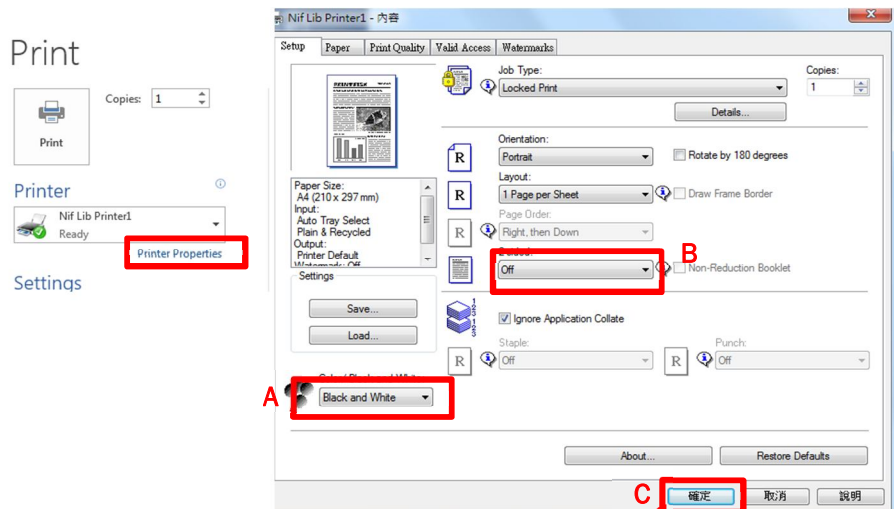
→Select printer (e.g : **Nif Lib Printer1 , 2, 3, 4 or 5**)



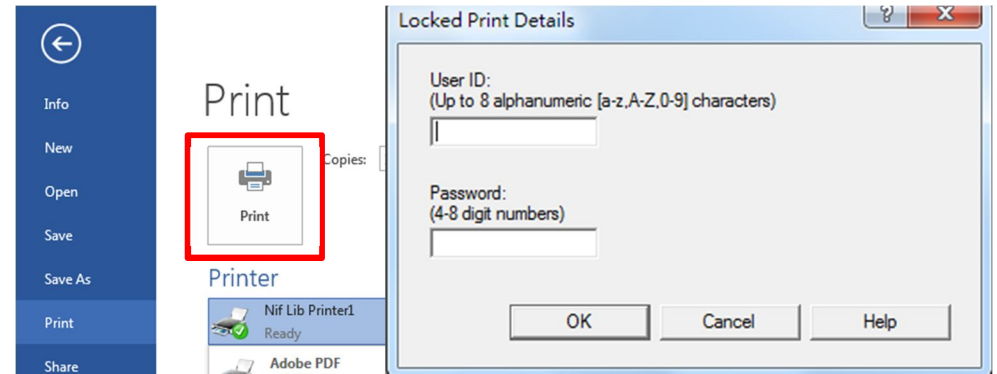
2. Set Printer Properties → Setup (**A / B**) → Setting completed click **“C”**

A. Color/Black and white

B. 2 sided /Duplex



3. Click “Print”→ Input your own user ID & Password → OK



4. Approach to your chosen printer →Insert Macau Pass → Find out your ID →Enter the password → Press “Login in” →Press “Print”

Friendly Reminder:

Tips 1 : 【Macau Pass】 No Sticker on the card

Tips 2 : 【Macau Pass】 Card quota balance must be at least \$10

Fee Standard :

Black/White : MOP\$0.30 page/A4 MOP\$0.50 page /A3

Color : MOP\$3.00 page /A4 MOP\$5.00 page /A3